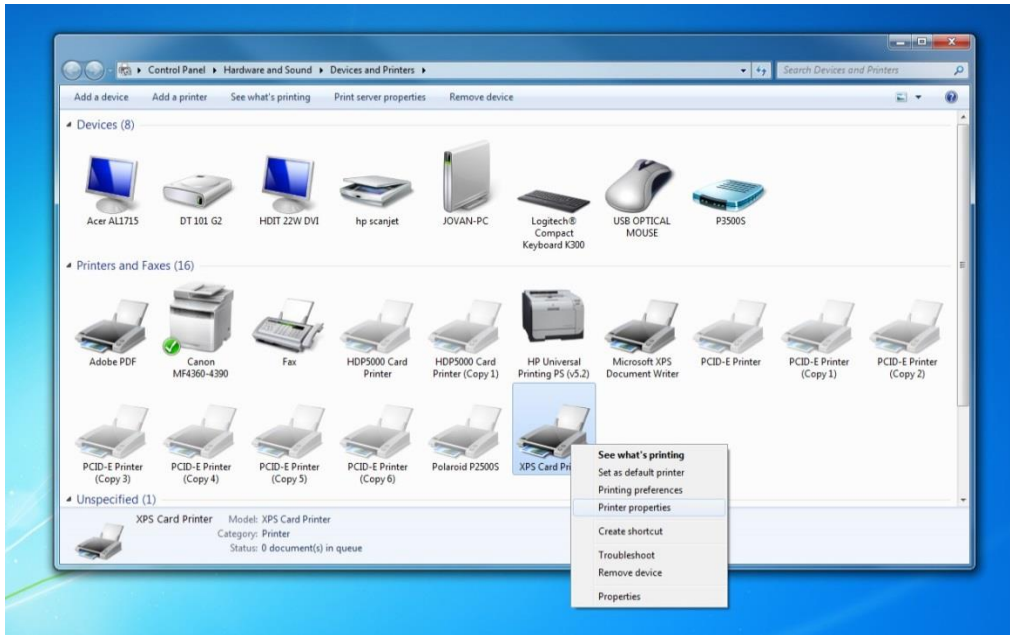
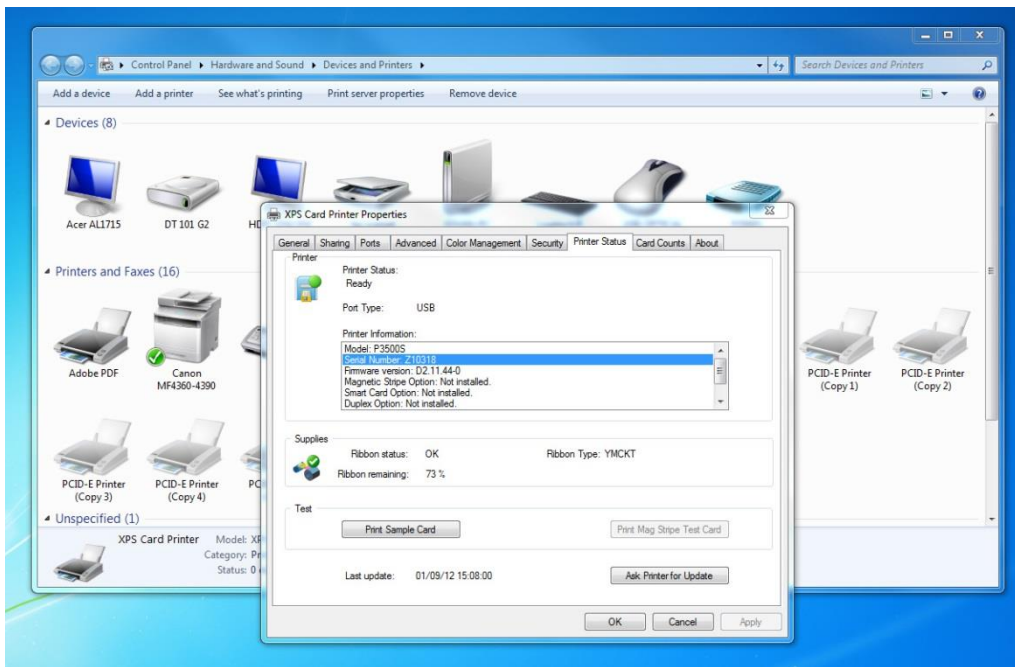


# Polaroid P3500S YMC Power Setup Guide

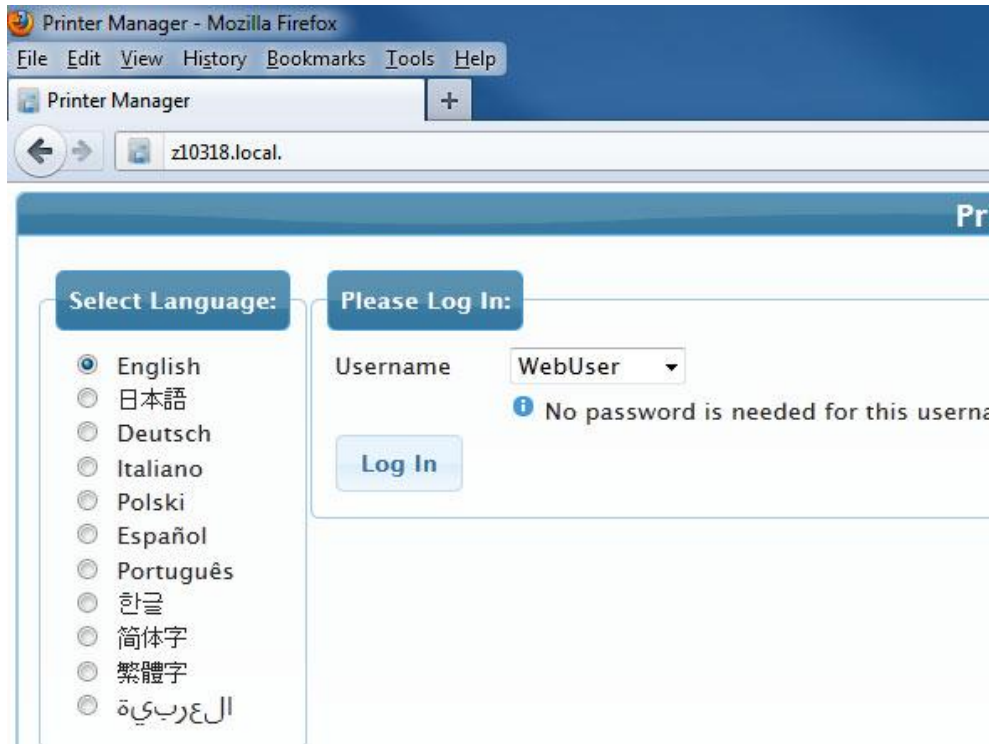
1. Turn your printer on. Go to **Start > Devices and Printers**. Right-click on **XPS Card Printer** and select **Printer Properties**.



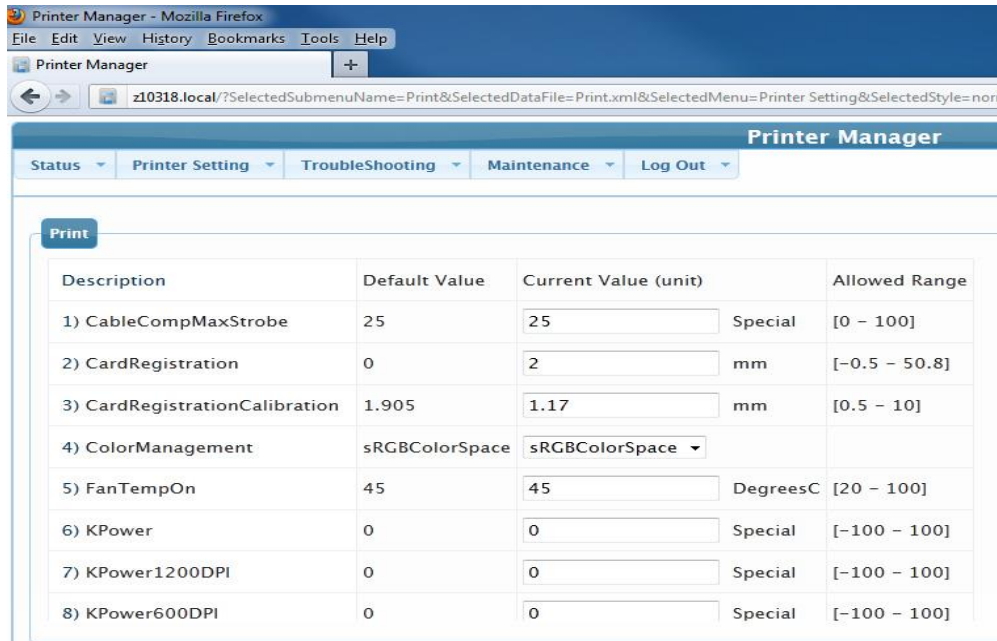
2. Click on the **Printer Status** tab. Then click **Configure Printer**



3. Choose “WebService” as your username and then enter “926918” as your password.



4. Go to **Printer Setting > Print**. Set the “YMC Calibration” to a higher number than what is shown (we recommend increasing it by 10 until your card prints with your desired results).



Scroll down to the bottom of the window. Click on **Set Current**.

The screenshot shows a web browser window titled 'Printer Manager - Mozilla Firefox'. The address bar shows the URL: `z10318.local/?SelectedSubMenuName=Print&SelectedDataFile=Print.xml&SelectedMenu=Printer Setting&SelectedStyle=normal&PHPSESSID=a`. The page has a navigation menu with 'Status', 'Printer Setting', 'TroubleShooting', 'Maintenance', and 'Log Out'. The main content area is titled 'Print' and contains a table with the following data:

25) YMCPower	0	<input type="text" value="0"/>	Special	[-100 - 100]
26) YMCPower600	0	<input type="text" value="0"/>	Special	[-100 - 100]
27) YMCPowerCalibration	0	<input type="text" value="34"/>	Special	[-100 - 100]
28) YMCPowerCalibration600	0	<input type="text" value="0"/>	Special	[-100 - 100]
29) YMCPowerDuplex	0	<input type="text" value="0"/>	Special	[-100 - 100]
30) YMCPowerNosRGB	-48	<input type="text" value="-48"/>	Special	[-100 - 100]
31) YMCWhiteShade	0	<input type="text" value="0"/>	Shades	[-100 - 100]

Below the table are two buttons: 'Set Current' and 'Restore Default'. A note below the buttons states: 'Clicking the Set Current button updates the settings on this page only, to the values entered above. Clicking the Restore Default button updates above.'

At the bottom of the page, the status bar shows 'Level: ServiceAccess | Hostname: Z10318' and 'Copyright © 2011 | Run time 3 seconds'.