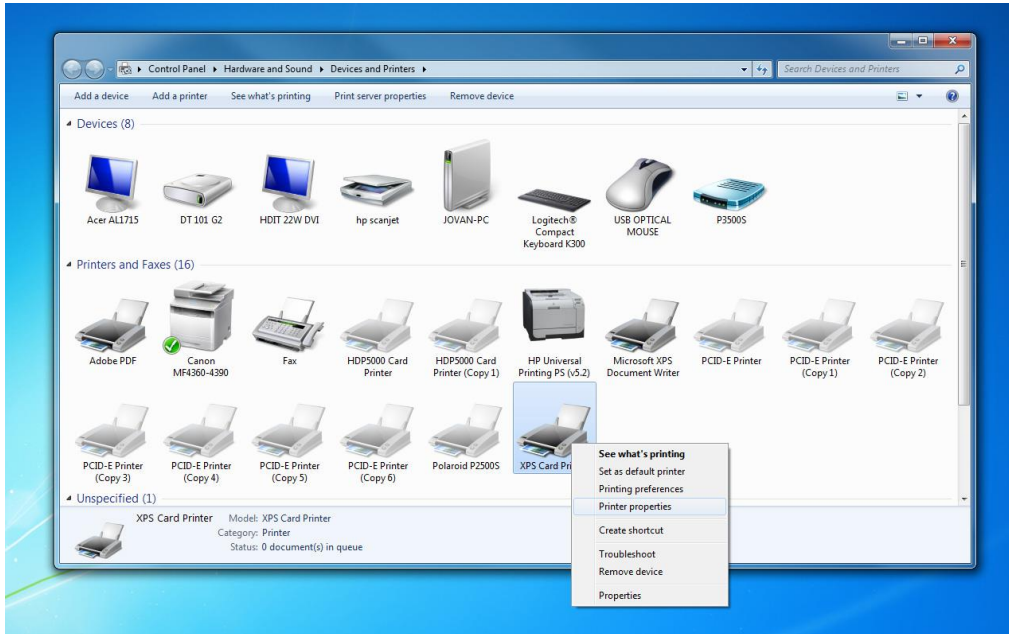
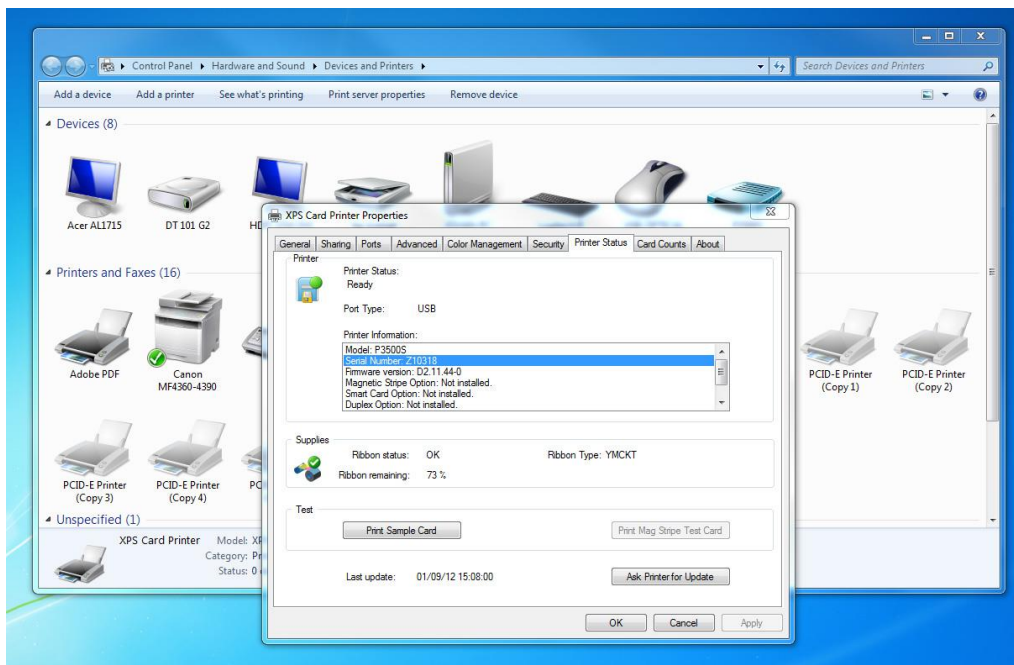


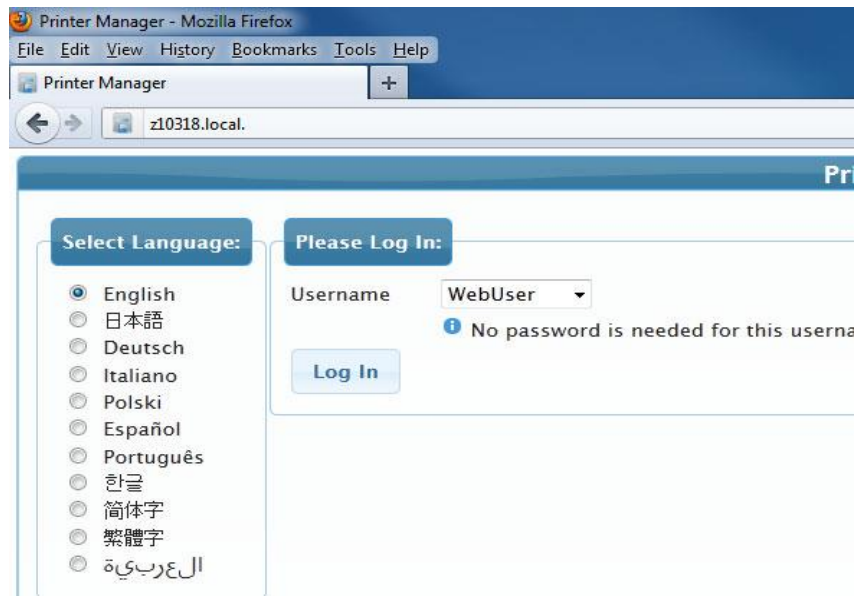
Polaroid P3500S YMC Power Setup Guide

1. Turn your printer on. Go to **Start > Devices and Printers**. Right-click on **XPS Card Printer** and select **Printer Properties**.

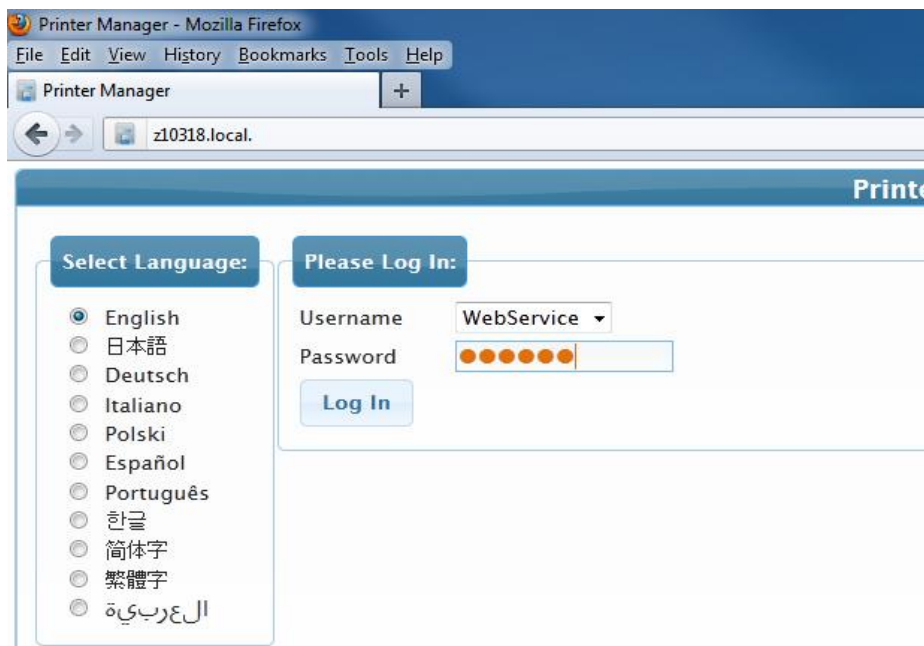


2. Click on the **Printer Status** tab. Click the button labeled **“Configure Printer”**





3. Choose “WebService” as your username and then enter “926918” as your password.



4. Go to **Printer Setting > Print**. Set the “YMC Power” and “YMC Power Calibration” to a lower number than what is shown (we recommend lower it by 10 until your card prints properly).

Description	Default Value	Current Value (unit)	Allowed Range
1) CableCompMaxStrobe	25	25 <input type="text"/>	Special [0 - 100]
2) CardRegistration	0	2 <input type="text"/> mm	[-0.5 - 50.8]
3) CardRegistrationCalibration	1.905	1.17 <input type="text"/> mm	[0.5 - 10]
4) ColorManagement	sRGBColorSpace	sRGBColorSpace <input type="text"/>	
5) FanTempOn	45	45 <input type="text"/> DegreesC	[20 - 100]
6) KPower	0	0 <input type="text"/>	Special [-100 - 100]
7) KPower1200DPI	0	0 <input type="text"/>	Special [-100 - 100]
8) KPower600DPI	0	0 <input type="text"/>	Special [-100 - 100]

5. Scroll down to the bottom of the window. Click on **Set Current**.

25) YMCPower	0	0 <input type="text"/>	Special [-100 - 100]
26) YMCPower600	0	0 <input type="text"/>	Special [-100 - 100]
27) YMCPowerCalibration	0	34 <input type="text"/>	Special [-100 - 100]
28) YMCPowerCalibration600	0	0 <input type="text"/>	Special [-100 - 100]
29) YMCPowerDuplex	0	0 <input type="text"/>	Special [-100 - 100]
30) YMCPowerNosRGB	-48	-48 <input type="text"/>	Special [-100 - 100]
31) YMCWhiteShade	0	0 <input type="text"/>	Shades [-100 - 100]

Clicking the Set Current button updates the settings on this page only, to the values entered above. Clicking the Restore Default button updates above.

Level: ServiceAccess | Hostname: Z10318

Copyright © 2011 | Run time 3 seconds

You may need to repeats step 5 & 6 until you achieve the desired outcome